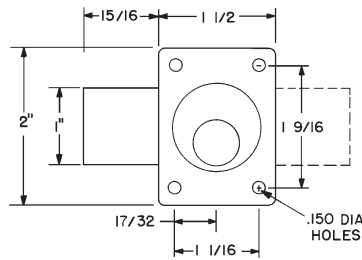
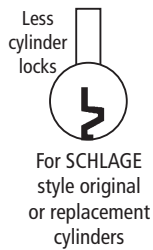


Standard Cylinder

Schlage C Keyway or Less Cylinder

► 700LC Door Lock

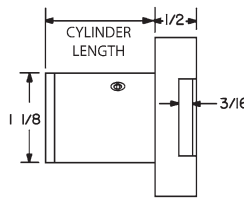


ANSI/BHMA
A156.11 Grade 1
E07121

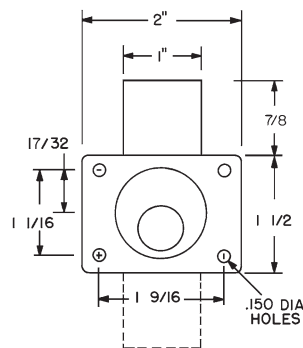
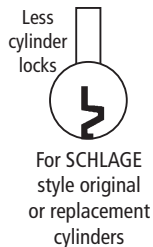
Woodwork Institute
(WI) acknowledged
product

Item	Finish	Cyl. Length	Keying
700LCA	26D, US3, 10B	1-1/8"	Less Cylinder
700LCM	26D, US3, 10B	1-3/8"	

Note: 700LCM 1-3/8" barrel length locks are required for use with Medeco or Assa cylinders.



► 800LC Drawer Lock

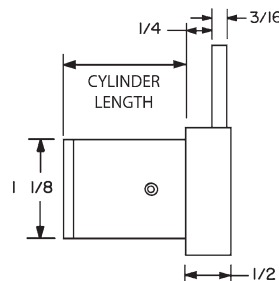


ANSI/BHMA
A156.11 Grade 1
E07041

Woodwork Institute
(WI) acknowledged
product

Item	Finish	Cyl. Length	Keying
800LCA	26D, US3, 10B	1-1/8"	Less Cylinder
800LCM	26D, US3, 10B	1-3/8"	

Note: 800LCM 1-3/8" barrel length locks are required for use with Medeco or Assa cylinders.



SPECIFICATIONS

Rekeyable: Easily rekeyable via set screw cylinder release mechanism

ANSI/BHMA: Passed ANSI/BHMA A156.11 Grade 1 performance requirements. Equivalent to E07121 (700LC) / E07041 (800LC).

US Patent Nos: 4,899,563; 4,920,774

Body: Zinc die cast

Cylinder: Will accept other manufacturer's Schlage compatible key-in-knob cylinders

Cylinder length: 1-1/8" or 1-3/8"

Barrel diameter: 1-1/8"

Finish: 26D, US3, 10B

Packaged: Packed 10 per box

INCLUDED ACCESSORIES

For 1-1/8" barrel length locks:

- 10-350 plastic spacers (qty 2)
- 10-054 1/4" plastic bar strike
- 10-055 1/2" plastic bar strike
- 10-361 tailpiece/driver bar
- 10-360 universal driver, and 1 tailpiece for use with Schlage compatible cylinders

For 1-3/8" barrel length locks:

- 10-054 1/4" plastic bar strike
- 10-360 universal driver, and 3 tailpieces for use with Schlage (10-362) compatible, Medeco (10-363) or Assa (10-364) cylinders

CYLINDER INFORMATION

Cylinder: Not included

Includes: All parts necessary to work with other manufacturers cylinders

ILCO cylinder: #1599 (various keyways available)

Assa cylinder: Requires LCM (1-3/8") locks

Assa p/n: #65611

Medeco cylinders: Requires LCM (1-3/8") locks

Original: 6 pin #20-009S4

5 pin #20-008S4

Biaxial: 6 pin #20W009S4

5 pin #20W008S4

Keymark: 6 pin #20K009S4

Key retaining cylinder: #20W200S1

Compatible electronic cylinders: Medeco LOGIC,

ASSA CLIQ or VIDEX CyberLock key-in-knob

cylinders

OPTIONAL ACCESSORIES

See the accessories section of this catalog for a complete list.

Spacers: 10-350 (1/8" thick), 10-348 (1/4" thick), 10-349 (1/2" thick)

Strikes: 10-052, 10-056, 10-057, 10-058, 12-2, 12-3, 12-4

Driver Bars (tailpiece): For 1 1/8" barrel length locks: 10-361, 10-361-KR (key-retaining).

For 1 3/8" barrel length locks:

10-362, 10-362-KR (key-retaining).

Driver bar for Medeco: 10-363

Driver bar for Assa: 10-364

Trim ring: TR78

Through-bolt hardware: ETS1 trim plate, ETS1-PL trim pull and ETST1 template

Cylinder: 78-201 Series (page 65)

Other: 78-KABA-CONV conversion kit for KABA-Peaks or Mul-T-Lock cylinders

► 78-KABA-CONV Kaba Conversion Kit

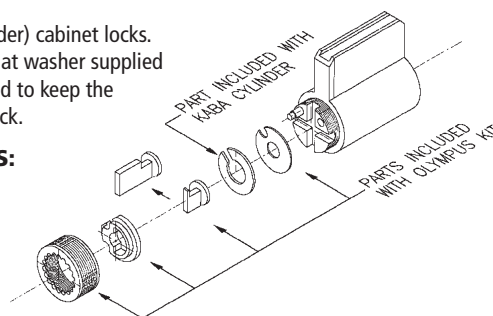
For use with Olympus 700LC and 800LC (less cylinder) cabinet locks. The conversion kit requires the use of the C-form flat washer supplied with the KABA-Peaks cylinder. The washer is needed to keep the Olympus tailpiece on center while operating the lock.

USE WITH THE FOLLOWING CYLINDERS:

KABA-Peaks universal cylinder

#3400-XX-1099 (where "XX" denotes finish)

Mul-T-Lock cylinders



Tel: 206.362.3290 | 800.525.0954
Fax 206.362.3569 | www.olympuslock.com



The following warning is applicable to all parts listed on this page:
WARNING: This product can expose you to chemicals including chromium, which is known to the State of California to cause cancer and birth defects or other reproductive harm. for more information go to www.P65Warnings.ca.gov.