

# Interchangeable Core

Best Compatible (Small Format)

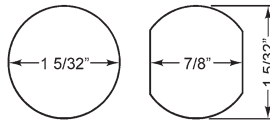
## ► 720 Cam Lock



For BEST style interchangeable core cylinders



### MOUNTING CUTOUT



**720-PL3**  
Anti-rotation plate

ANSI/BHMA  
A156.11 Grade 1  
E07261/E07271

Woodwork Institute  
(WI) acknowledged  
product

Item	Finish	Body	Cyl. Diameter	Mat. Thickness	Description
720LM/DM	26D, US26, US3	Zinc die cast	1-1/8"	Up to 1-1/8"	Lock body - For small format IC

### SPECIFICATIONS

Retrofits: Best 1E7E4

ANSI/BHMA: Passed ANSI/BHMA A156.11 Grade 1 performance requirements. Equivalent to E07261/E07271.

Cylinder diameter: 1-1/8"

Across flats: 7/8"

Max. material thickness: 1-1/8"

Min. material thickness: 0.08"

Functions: Includes parts for key-retaining or non-key-retaining function

Body: Zinc die cast or machined solid brass

Finish: 26D, US26, US3 or US4

Packaged: Packed 10 per box

### KEYING INFORMATION

Cores: Not included.

Accepts: Best, Arrow, Falcon, KSP, Schlage SFIC or equivalent small format interchangeable cores

Compatible electronic cylinders: Medeco Nexgen XT or VIDEX CyberLock SFIC cylinders

### INCLUDES

- 725-PA plastic thumbturn
- 720-PL3 stabilizer plate
- 725-1 spacer to fit 6 or 7 pin cores
- 720-3-1 short inverted cam
- 720-3-2 long vertical cam
- 720-CDLM lost motion cam shifter
- 720-CDDM key retaining door cam shifter
- 720-KR key retaining drawer cam shifter

### OPTIONAL ACCESSORIES

See accessories on page 80-81. See page 81 for cam assembly instructions.

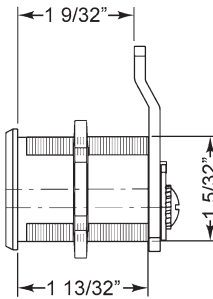
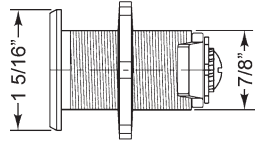
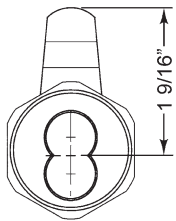
Optional cams: 720-3-3, 720-3-4, 720-3-5

Trim collars: TR200 Series

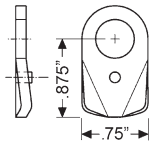
Switch accessory pack: SW-1

CL-MP-118: Double-D metal punch (page 70)

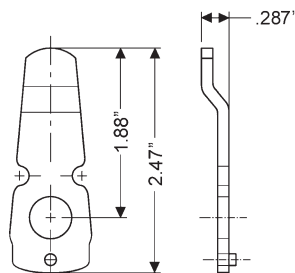
SFIC cores: 206/207 Series (page 64)



### INCLUDED CAMS



**720-3-1**  
for inverted function



**720-3-2**  
inbent cam for vertical function  
(bottom-pin style)



The following warning is applicable to all parts listed on this page:  
**WARNING:** This product can expose you to chemicals including chromium, which is known to the State of California to cause cancer and birth defects or other reproductive harm. for more information go to [www.P65Warnings.ca.gov](http://www.P65Warnings.ca.gov).

