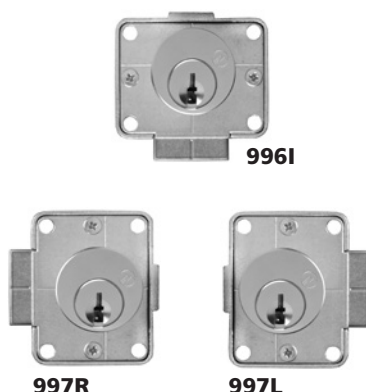


► 996 | 997 Latch Lock

Field reversible into all four handings!



996V



996I

997R

997L

FIELD REVERSIBLE INTO ALL FOUR HANDINGS

| Item | Function | Finish | Cyl. Length | Keying |
|---|-----------|--------|------------------|---|
| 997R | RH Door | 26D | 15/16" or 1-3/8" | KD, KA 4T21579, 4T37526 Custom Keyed |
| 997L | LH Door | 26D | 15/16" or 1-3/8" | |
| 996V | VH Drawer | 26D | 15/16" or 1-3/8" | |
| 996I | IH Drawer | 26D | 15/16" or 1-3/8" | |
| Field reversible: Locks are easily reconfigured in the field into any of the four handings. | | | | |

SPECIFICATIONS

Function: Spring latch
Keying: Can be keyed together with other R Series locks
Reversible: Easily reversible between door and drawer function
Rekeyable: Easily rekeyable via set screw cylinder release mechanism
US Patent Nos: 4,899,563; 7,874,189 B2
Body: Zinc die cast
Cylinder: Solid brass, pin tumbler
Cylinder length: 15/16" or 1-3/8"
Barrel diameter: 7/8"
Latch projection: 1/4"
Finish: 26D
Packaged: Packed 10 per box

KEYING INFORMATION

Keyway: R Series (equivalent to CCL R1 system)
Keys: Includes 2 keys per lock
Stock keying: KD/KA - 5 pin standard
Stock KA#: 4T21579, 4T37526
Masterkeyed: 5 pin standard, 6 pin available
Grand masterkeyed: Available
Keyblank 5-pin: KBR-5-NP (equivalent to C0106, 1003A)
Keyblank 6-pin: KBR-6-NP (equivalent to L1003A)

INCLUDED ACCESSORIES

Strike: 999-STRIKE (slotted lip strike)

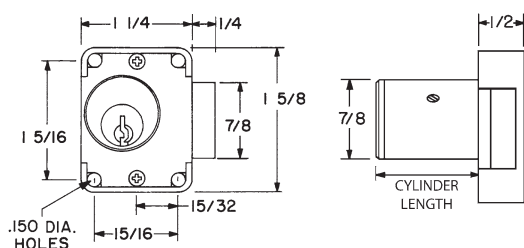
OPTIONAL ACCESSORIES

See the accessories section of this catalog for a complete list.

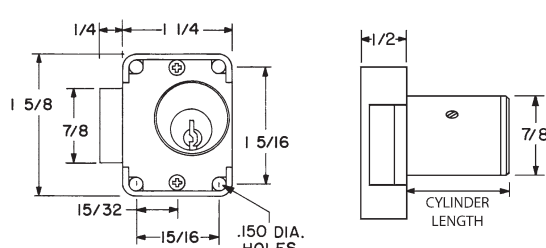
Spacer: WP24 (1/8" thick)

Trim ring: TR1256

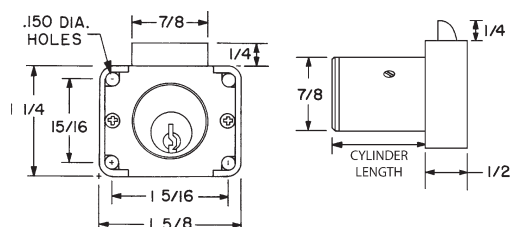
997L LEFT HAND



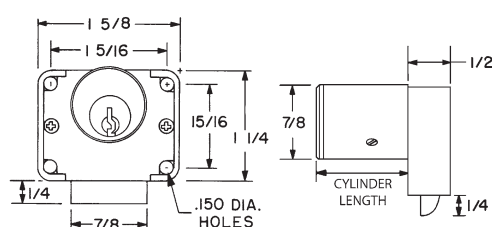
997R RIGHT HAND



996V VERTICAL HAND



996I INVERTED HAND



The following warning is applicable to all parts listed on this page:



WARNING: This product can expose you to chemicals including chromium, which is known to the State of California to cause cancer and birth defects or other reproductive harm. for more information go to www.P65Warnings.ca.gov.

