

### ► ETS Series Through-bolt mounting hardware

#### ETS SERIES (a)

##### Exterior through-bolt plate

**Attractive mounting:** External metal through-bolt plate *figure (a)* allows for flush mounting of the cabinet lock face with face of cabinet

**Increases security:** Reinforces the cabinet face by direct connection of lock mounting screws to through-bolt plate's binder posts

**Available finishes:** US3 and 26D

**Includes:** Mounting screws

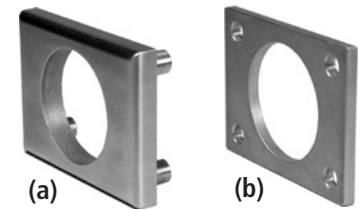
#### ETST SERIES (b)

##### Spacer/template for through-bolt plate

**Mounting guide:** The spacer/template *figure (b)* allows for proper mounting hole placement of external through-bolt plate

**Spacer:** Can be used as a 1/8" shim spacer

**Available finishes:** US3 and 26D

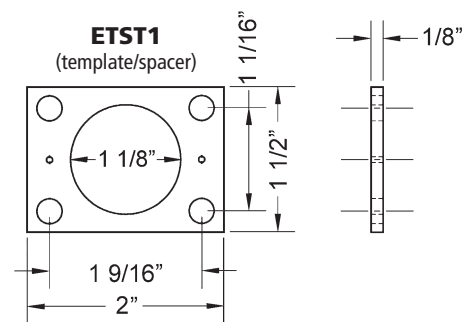
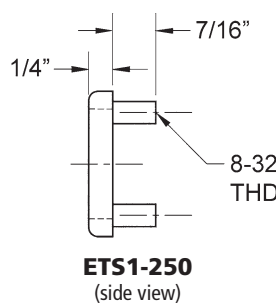
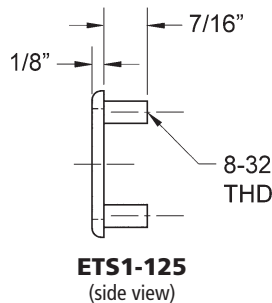
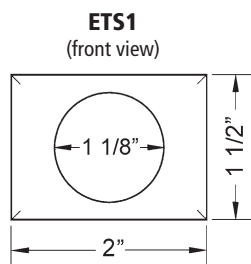


Through-bolt plates and spacer/templates increase security by providing through-bolt mounting of Olympus cabinet locks. U.S. Patent No. D490,686 S

### ► ETS1 | ETST1

For use with 700, 721, 754, 777, 800, 850, 854, 888, 931, 950, L72V, L92V

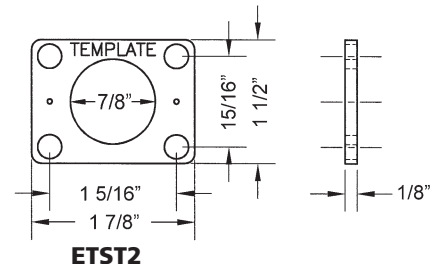
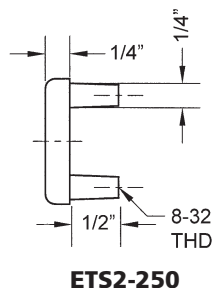
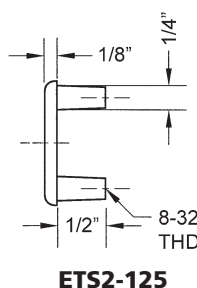
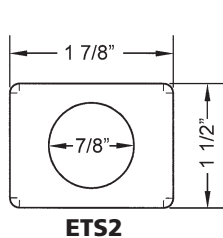
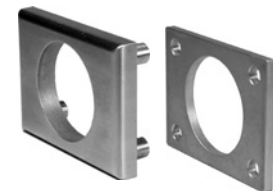
Item	Finish	Description
ETS1-125	26D, US3	1/8" thick through-bolt plate
ETS1-250	26D, US3	1/4" thick through-bolt plate
ETST1	26D, US3	Through-bolt plate spacer/template



### ► ETS2 | ETST2

For use with 100, 200, 500, 600, L20V

Item	Finish	Description
ETS2-125	26D, US3	1/8" thick through-bolt plate
ETS2-250	26D, US3	1/4" thick through-bolt plate
ETST2	26D, US3	1/8" spacer/template



The following warning is applicable to all parts listed on this page:



**WARNING:** This product can expose you to chemicals including chromium, which is known to the State of California to cause cancer and birth defects or other reproductive harm. for more information go to [www.P65Warnings.ca.gov](http://www.P65Warnings.ca.gov).

