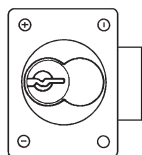


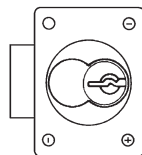
## ► L92V Latch Lock



For door applications,  
place lock on side.

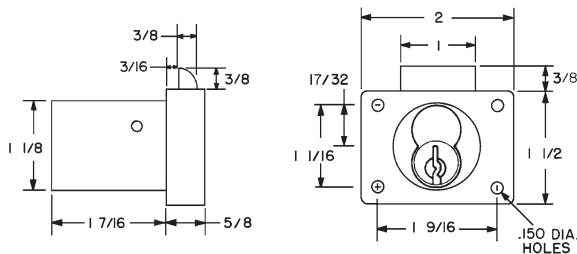


Left-Hand Door



Right-Hand Door

Item	Handing	Finish	Cyl. Length	Keying
L92V	VH Drawer	26D, US3	1-7/16"	Lock body - For Schlage full-size IC



## SPECIFICATIONS

**Function:** Spring latch  
**Body:** Zinc die cast  
**Barrel diameter:** 1-1/8"  
**Cylinder length:** 1-7/16"  
**Latch projection:** 3/8"  
**Handing:** Drawer Vertical  
**Finish:** 26D or US3  
**Packaged:** Packed 10 per box

## CYLINDER INFORMATION

**Cylinder:** Not included  
**Accepts:** Schlage large format/full-size IC cylinders  
 - Schlage Quad, Numbered Section, and Schlage Classic IC cores  
 - Schlage Primus® and Everest large format IC cores  
 - Mul-T-Lock large format IC cores  
**Compatible electronic cylinders:** VIDEX CyberLock LFIC cylinders

## INCLUDED ACCESSORIES

10-350 spacers (qty 3)  
 L78ST-1-SS matching lip strike  
 7788-PA-D plastic thumbturn

## OPTIONAL ACCESSORIES

See the accessories section of this catalog for a complete list.

**Spacers:** 10-350 (1/8" thick), 10-348 (1/4" thick), 10-349 (1/2" thick)

**Trim ring:** TR78

**Through-bolt hardware:** ETS1 trim plate, ETS1-PL trim pull and ETST1 template



**OLYMPUS**  
LOCK

Tel: 206.362.3290 | 800.525.0954  
 Fax 206.362.3569 | www.olympuslock.com



The following warning is applicable to all parts listed on this page:  
**WARNING:** This product can expose you to chemicals including chromium, which is known to the State of California to cause cancer and birth defects or other reproductive harm. for more information go to [www.P65Warnings.ca.gov](http://www.P65Warnings.ca.gov).