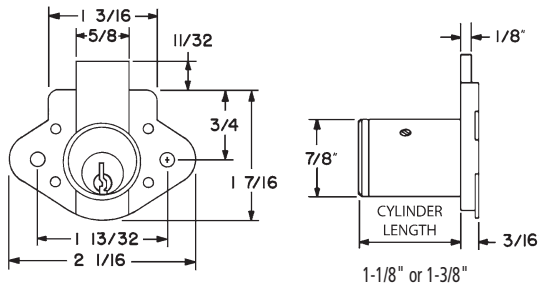


## ► N078 Drawer Lock

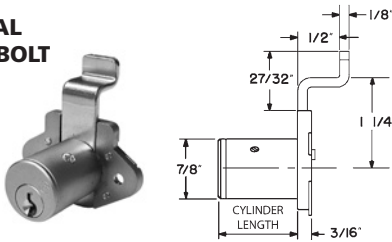


**N078**  
DRAWER



Item	Function	Finish	Cyl. Length	Keying
N078	VH Drawer	26D, US4	1-1/8" or 1-3/8"	KD, KA 101,103,107,915 Custom Keyed
<b>Outbent bolt installed:</b>		Specify <b>LB1</b> for 1/2" offset outbent drawer bolt installed in lock.		
<b>Outbent bolt only:</b>		Order part number <b>078-LB1-DW</b> for outbent drawer bolt only.		

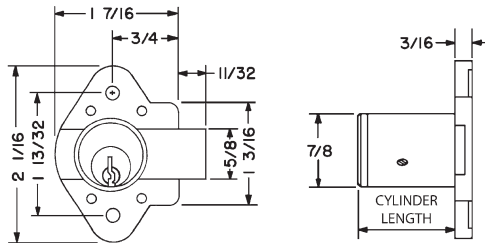
### OPTIONAL OFFSET BOLT



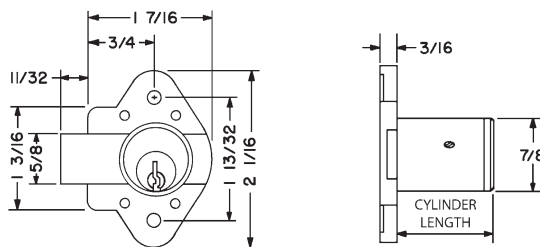
## ► N078L | N078R Door Lock



**N078L**  
LH DOOR



**N078R**  
RH DOOR



Item	Function	Finish	Cyl. Length	Keying
N078R	RH Door	26D	1-1/8" or 1-3/8"	KD, KA 101,103,107,915 Custom Keyed
N078L	LH Door	26D	1-1/8" or 1-3/8"	
<b>Long bolt installed:</b>		Specify <b>LB</b> for extended door bolt installed in lock.		
<b>Long bolt only:</b>		Order part number <b>078-LB-DR</b> for extended door for bolt only.		

**NOTE:** N078R / N078L are reversible between left and right handings.

### SPECIFICATIONS

- Keying:** Can be keyed together with other N Series locks
- Rekeyable:** Easily rekeyable via set screw cylinder release mechanism
- US Patent Nos:** 4,899,563; 4,920,774
- Standard function:** Key removable in locked or unlocked position.
- Door locks:** Can be reversed between left and right hand.
- Body:** Zinc die cast
- Cylinder:** Solid brass, pin tumbler
- Cylinder length:** 1-1/8" or 1-3/8"
- Barrel diameter:** 7/8"
- Finish:** 26D (door or drawer) or US4 (drawer only)
- Packaged:** Packed 10 per box

### KEYING INFORMATION

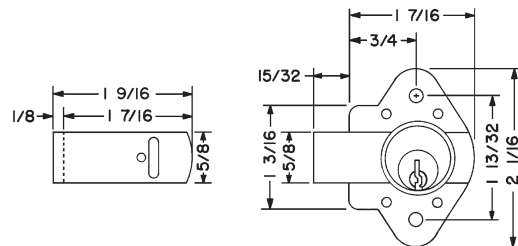
- Keyway:** N Series (equivalent to National D4291 4-pin or D4292 5-pin system)
- Keys:** Includes 2 keys per lock
- Stock keying:** KD/KA - 4 pin standard
- Stock KA#:** 101, 103, 107, 915
- Masterkeyed:** 5 pin standard
- Grand masterkeyed:** Available
- Keyblank 4-pin:** KBN-4-NP (equivalent to NA14, 1069L)
- Keyblank 5-pin:** KBN-5-NP (equivalent to NA12, 1069LA)

### OPTIONAL ACCESSORIES

- See the accessories section of this catalog for a complete list.
- Spacers:** WP20 (3/16" thick), WP21 (3/32" thick), WP22 (1/4" thick), WP23 (1/2" thick)
- Strikes:** 07S, 56-1, 12-1, 12-2, 12-3, 12-4 strikes
- Trim ring:** TR1256
- Optional drawer bolt:** 078-LB1-DW long bolt with 1/2" offset (drawer only)
- Optional door bolt:** 078-LB-DR 1/4" straight long bolt (door only)

### OPTIONAL LONG BOLT

Extends overall bolt length by an additional 1/8". Reversible for use with LH or RH locks.



The following warning is applicable to all parts listed on this page:  
**WARNING:** This product can expose you to chemicals including chromium, which is known to the State of California to cause cancer and birth defects or other reproductive harm. For more information go to [www.P65Warnings.ca.gov](http://www.P65Warnings.ca.gov).

