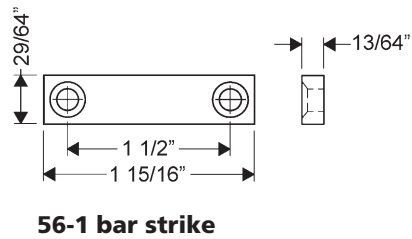


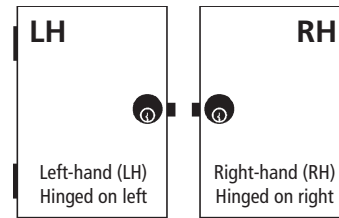
**Included Accessories:**

- 2 nickel plated keys
- 56-1 bar strike
- 4 lock mounting screws

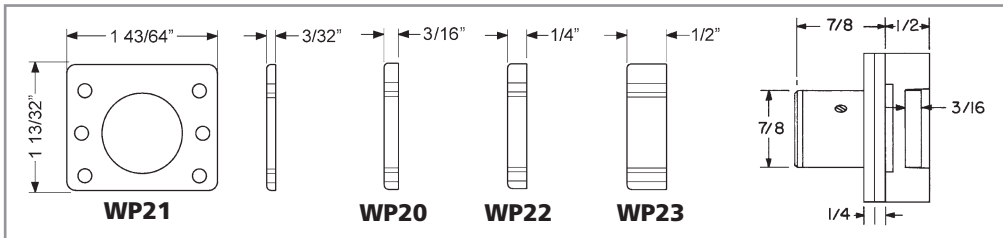


**56-1 bar strike**

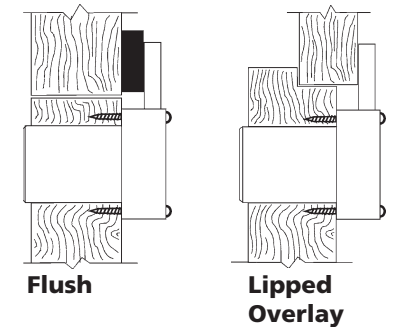
**Installation/handing for key-retaining option**



**Optional spacers** Note: use of spacers and strikes depends on application and material thickness.

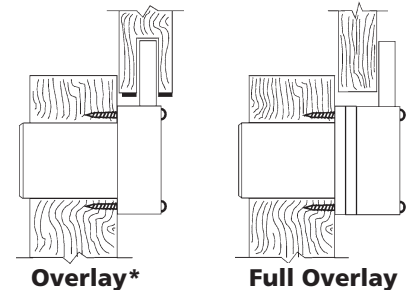


**Typical Installation**



**Flush**

**Lipped  
Overlay**



**Overlay\***

**Full Overlay**

\*Overlay installation is not recommended for particleboard.

**Drill Guide** Cut out this handy drill guide for easy installation.

