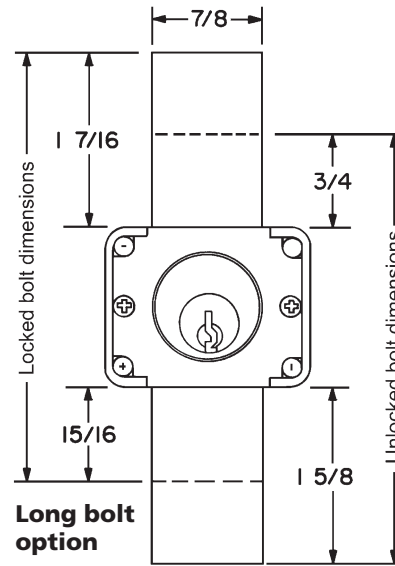
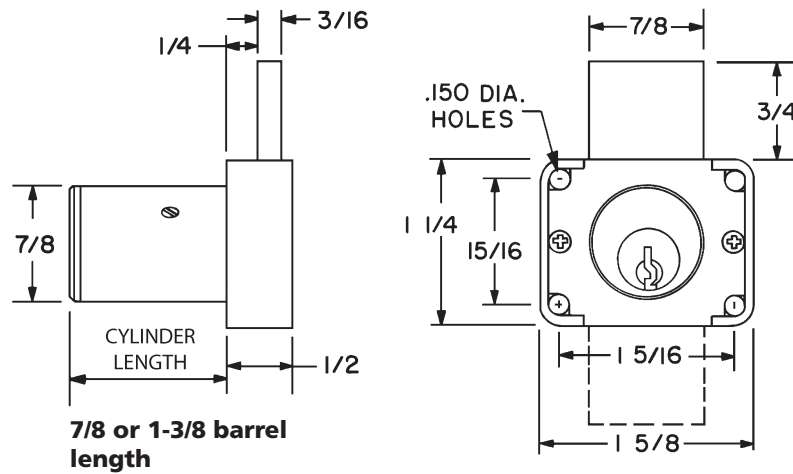


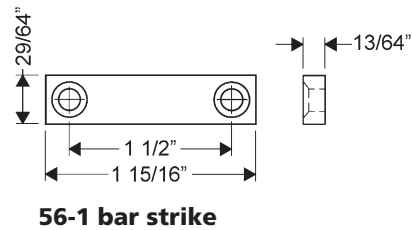
# INSTALLATION INSTRUCTIONS

## 600M Deadbolt Drawer Lock non-magnetic (MRI)



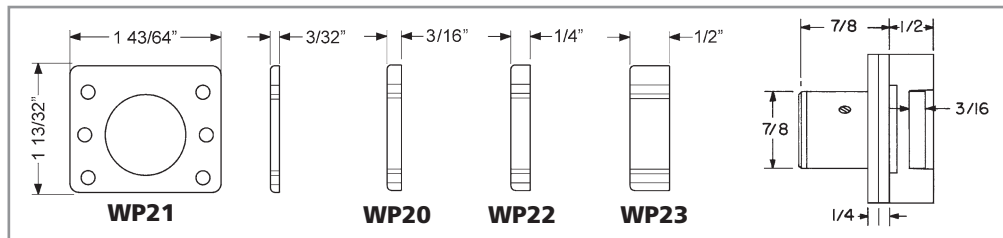
### Included Accessories:

- 2 copper plated keys
- 56-1 bar strike
- 4 lock mounting screws

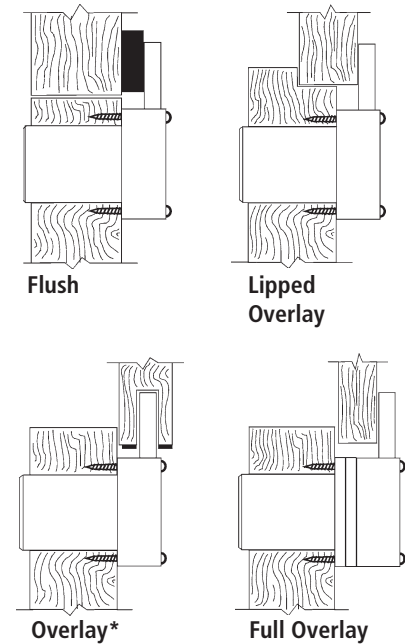


56-1 bar strike

**Optional spacers** Note: use of spacers and strikes depends on application and material thickness.

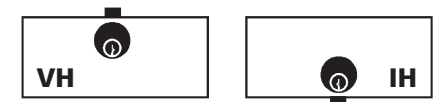


### Typical Installation



\*Overlay installation is not recommended for particleboard.

### Installation/handling for key-retaining option

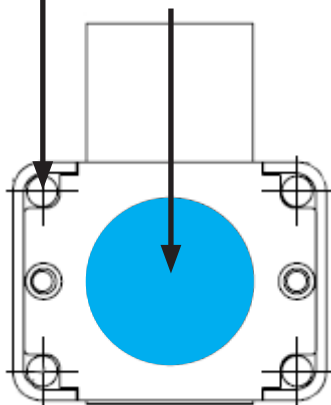


**Drill Guide** Cut out this handy drill guide for easy installation.

**Installation Template:**  
600DW, 600B, 600M

Drill four 1/16" diameter  
holes from the inside

Drill a 7/8" diameter  
hole from the outside



© Olympus Lock, Inc.