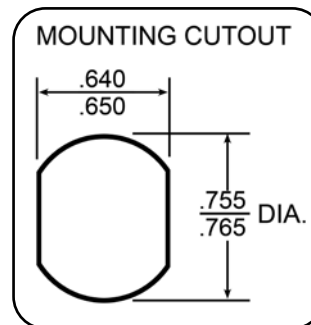


The Combi-Cam Ultra will retrofit a standard 3/4" cam lock and can be mounted horizontally or vertically on flush or overlay applications. It offers dual access with both keys or combinations.

INSTALLATION INSTRUCTIONS

- Step 1** Insert lock body through front of 3/4" drilled hole (**See below note on use of optional stabilizer pin*).
- Step 2** Note clear, distinct locked and unlocked indicators on front of lock. Knob will be turned to the 'open' position to release the lock.
- Step 3** Thread cylinder nut onto lock body and tighten into place.
- Step 5** Attach 90 degree stop cam (*note direction of stop cam impacts turning radius for lock*).
- Step 6** Attach straight cam (*which hole you use will depend on your specific application*).
- Step 7** Secure with cam nut and washer.
- Step 8** Test to confirm cam orientation and cam swing are correct for your application.



Unlocked Locked



INCLUDED COMPONENTS

Included but not shown below:
fixing nut and stabilizer pin



STRAIGHT CAM

1-1/2" straight cam

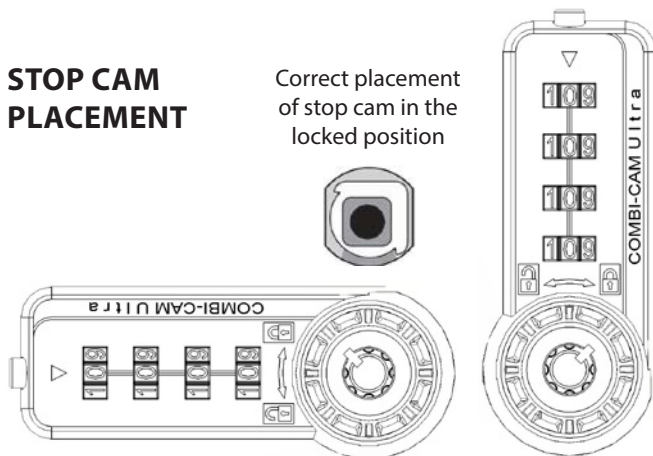


STOP CAM

90° (degree)
stop cam

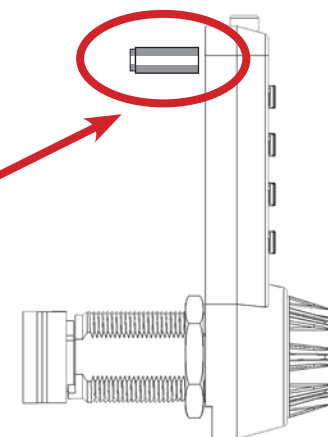
STOP CAM PLACEMENT

Correct placement
of stop cam in the
locked position

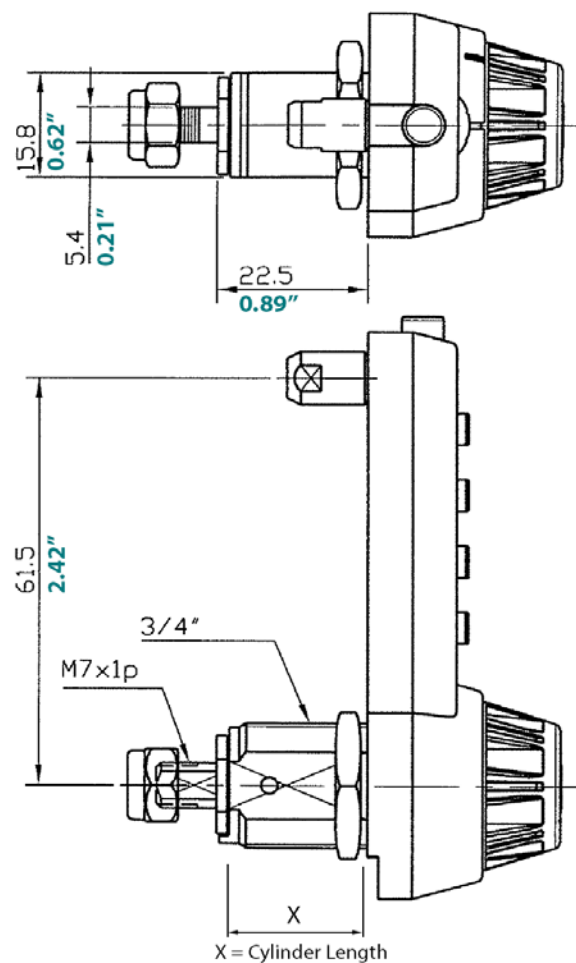


Stabilizer Pin / Stabilizer Hole

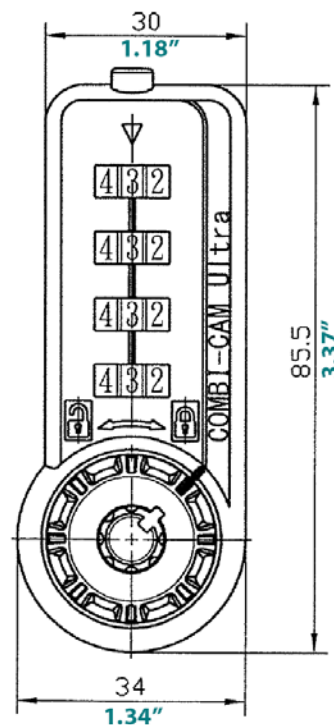
This lock comes with an optional stabilizer pin that can be inserted into a stabilizer hole drilled 2" up from the center of the cylinder hole to keep the lock straight and avoid twisting after installation.



DIMENSIONS



Millimeters
Inches



Cylinder Mounting Holes

