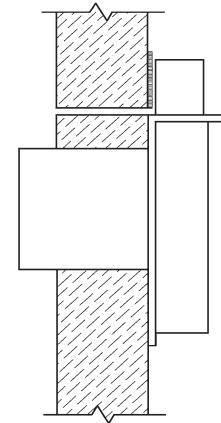


NOTE: Dimensions are the same for all handings

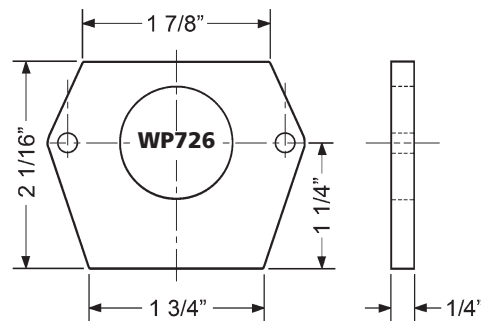
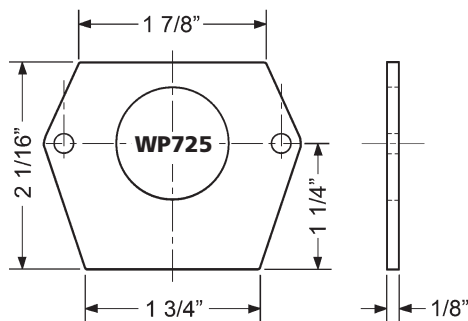
Typical Installation



Included Accessories:

- 1 725-1 6-pin spacer
- 1 725-PA plastic thumbturn
- 1 725-SP-RL strike and screws (#5 x 5/8")
- 2 lock mounting screws (#8 x 5/8")

Spacer options Note: use of spacers and strikes depends on application and material thickness.



Handing Chart

