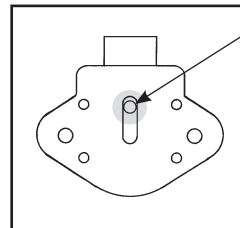


Dimensions with optional long offset bolt installed.

Included Accessories:

- 2 nickel plated keys
- 2 lock mounting screws



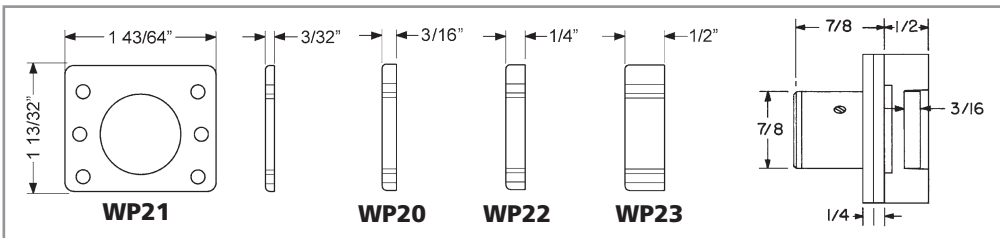
Alignment pin allows for sideways or upside-down mounting.

Installation/handling

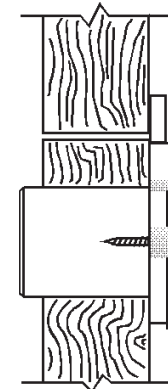


For inverted function, lock must be installed upside-down.

Optional spacers Note: use of spacers and strikes depends on application and material thickness.



Typical Installation



Flush Mounted Lock

Note: Depending on your application of overlay, full overlay, or lipped overlay, you may need to use one of our optional strikes.