

# 500DR | 600DW

## R Series: Deadbolt Door & Drawer Cabinet Locks

**ANSI/BHMA Grade 1  
E07121 | E07041**  
**Woodwork Institute (WI)  
acknowledged product**

### SPECIFICATIONS

**Keying:** Can be keyed together with other R Series locks

**Rekeyable:** Easily rekeyable via set screw cylinder release mechanism

**ANSI/BHMA:** Passed ANSI/BHMA A156.11 Grade 1 performance requirements. Equivalent to E07121(500DR) / E07041(600DW).

**Non-magnetic:** See our 500M/600M Series MRI locks.

**Standard function:** Key removable in locked or unlocked position. Standard function locks are non-handed.

**Key-retaining:** Key removable in locked position only. Specify handing (KL/KR for doors or KI/KV for drawers) when ordering.

**Long bolt:** Extends bolt 3/4" on both ends. Specify -LB option when ordering.

**US Patent Nos:** 4,899,563; 4,920,774

**Body:** Zinc die cast

**Cylinder:** Solid brass, pin tumbler

**Cylinder length:** 15/16" or 1-3/8"

**Barrel diameter:** 7/8"

**Finish:** 26D, US4 or 10B\*

\*US10B not available on 500DR 1-3/8"

**Packaged:** Packed 10 per box

### KEYING INFORMATION

**Keyway:** R Series (equivalent to CCL R1 system)

**Keys:** Includes 2 keys per lock

**Stock keying:** KD/KA - 5 pin standard

**Stock KA#:** 4T21579, 4T37526

**Masterkeyed:** 5 pin standard, 6 pin available

**Grand masterkeyed:** Available

**Keyblank 5-pin:** KBR-5-NP (equivalent to CO106, 1003A)

**Keyblank 5-pin copper plated:** KBR-5B (use with M Series MRI locks)

**Keyblank 6-pin:** KBR-6-NP (equivalent to L1003A)

### INCLUDED ACCESSORIES

**500DR:** 2 keys, 56-1 bar strike, and lock mounting screws.

**600DW:** 2 keys, 12-3 angle strike, and lock mounting screws.

### OPTIONAL ACCESSORIES

**Spacers:** WP20 (3/16" thick), WP21 (3/32" thick), WP22 (1/4" thick), WP23 (1/2" thick)

**Strikes:** 07S, 12-1, 12-2, 12-3, 12-5, 12-4, 56-1

**Trip collar:** TR1256

**Through-bolt hardware:** ETS2 through-bolt plate, ETS2-PL trim pull and ETST2 template

**Extended (long) bolt:** 15-1-35 (for use with 500DR or 600DW)



56-1

### 500DR

**Function:** Cabinet door lock

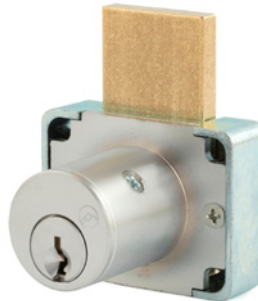
**ANSI/BHMA No.** E07121

**Barrel length:** 15/16" or 1-3/8"

**Extended bolt:** Extends overall bolt length by 1-1/2". Specify -LB option at time of order.



With long-bolt option



12-3

### 600DW

**Function:** Drawer lock

**ANSI/BHMA No.** E07041

**Barrel length:** 15/16" or 1-3/8"

**Extended bolt:** Specify -LB option at time of order.



With long-bolt option

### AVAILABLE FINISHES



US26D



US4



US10B



**WARNING:** This product can expose you to chemicals including chromium, which is known to the State of California to cause cancer and birth defects or other reproductive harm. For more information go to [www.P65Warnings.ca.gov](http://www.P65Warnings.ca.gov).



**OLYMPUS<sup>®</sup>  
LOCK**

# 500DR | 600DW

ANSI/BHMA Grade 1  
E07121 | E07041

## R Series: Deadbolt Door & Drawer Cabinet Locks

**OPTIONAL ACCESSORIES** - See our website for a complete list of optional components.

### Internal plastic spacers

- WP20 3/16" thick plastic spacer
- WP21 3/32" thick plastic spacer
- WP22 1/4" thick plastic spacer
- WP23 1/2" thick plastic spacer

### Strikes

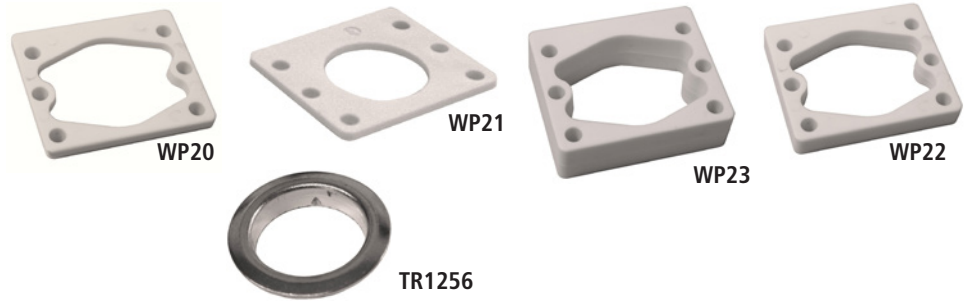
- 07S, 12-1, 12-2, 12-3, 12-4, 12-5, 56-1

### Trim Ring

- TR1256 trim ring

### Extended bolt

- 15-1-35 (see below for installed dimensions)



### Through-bolt plate

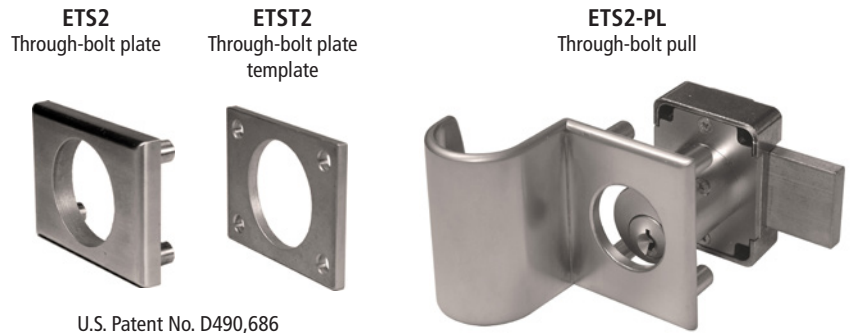
External metal 1/8" or 1/4" through-bolt plate allows for an attractive flush mounting of the cabinet lock face. Available in US3 or US26D finish.

- ETS2-125 through-bolt plate, 1/8" thick
- ETS2-250 through-bolt plate, 1/4" thick

### Through-bolt plate template

Allows for proper mounting hole placement of through-bolt plate. Can be used as a 1/8" shim spacer. Available in US3 and US26D finish.

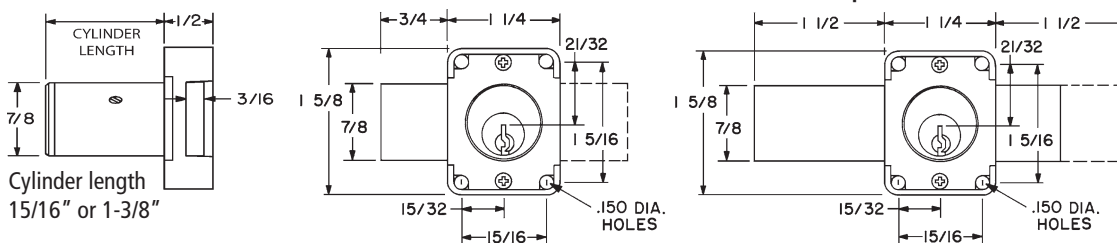
- ETST2 through-bolt plate template



U.S. Patent No. D490,686

## DIMENSIONS

### 500DR Cabinet Door Lock



### 600DW Drawer Lock

