

## 500M | 600M

### R Series: Non-Ferrous MRI Deadbolt Door & Drawer Cabinet Locks

**ANSI/BHMA Grade 1  
E07121 | E07041**

**For use in medical  
MRI applications**

#### SPECIFICATIONS

**Keying:** Can be keyed together with other R Series locks  
**Non-magnetic:** Contains all non-ferrous (non-magnetic) components and keys. Suitable for use in MRI (magnetic resonance imaging) applications. Includes copper plated non-magnetic keys.

**Rekeyable:** Easily rekeyable via set screw cylinder release mechanism

**ANSI/BHMA:** Passed ANSI/BHMA A156.11 Grade 1 performance requirements. Equivalent to E07121(500M) / E07041(600M).

**Standard function:** Key removable in locked or unlocked position. Standard function locks are non-handed.

**Key-retaining:** Key removable in locked position only. Specify handing (KL/KR for doors or KI/KV for drawers) when ordering.

**Long bolt:** Extends bolt 3/4" on both ends. Specify -LB option when ordering.

**Standard locks:** See our 500DR/600DW products

**US Patent Nos:** 4,899,563; 4,920,774

**Body:** Zinc die cast

**Cylinder:** Solid brass, pin tumbler

**Cylinder length:** 15/16" or 1-3/8"

**Barrel diameter:** 7/8"

**Finish:** US26D

**Packaged:** Packed 10 per box

#### KEYING INFORMATION

**Keyway:** R Series (equivalent to CCL R1 system)

**Keys:** Includes 2 keys per lock

**Stock keying:** KD/KA - 5 pin standard

**Stock KA#:** 4T21579, 4T37526

**Masterkeyed:** 5 pin standard, 6 pin available

**Grand masterkeyed:** Available

**Keyblank 5-pin copper plated:** KBR-5B  
(use with 500M/600M MRI locks)

#### INCLUDED ACCESSORIES

**500M:** 2 keys, 56-1 bar strike, and lock mounting screws

**600M:** 2 keys, 56-1 bar strike, and lock mounting screws

#### OPTIONAL ACCESSORIES

**Spacers:** WP20 (3/16" thick), WP21 (3/32" thick), WP22 (1/4" thick), WP23 (1/2" thick)

**Trim collars:** TR1256

**Through-bolt hardware:** ETS2 through-bolt plate, ETS2-PL trim pull and ETST2 template

**Extended (long) bolt:** 15-1-35 (for use with 500M or 600M)



US26D finish



56-1



Includes copper plated non-magnetic keys.



With long-bolt option

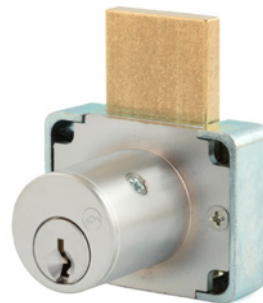
#### 500M

**Function:** Cabinet door lock

**ANSI/BHMA No.** E07121

**Barrel length:** 15/16" or 1-3/8"

**Extended bolt:** Extends overall bolt length by 1-1/2". Specify -LB option at time of order.



US26D finish



56-1



Includes copper plated non-magnetic keys.



With long-bolt option

#### 600M

**Function:** Drawer lock

**ANSI/BHMA No.** E07041

**Barrel length:** 15/16" or 1-3/8"

**Extended bolt:** Specify -LB option at time of order.

**WARNING:** This product can expose you to chemicals including chromium, which is known to the State of California to cause cancer and birth defects or other reproductive harm. For more information go to [www.P65Warnings.ca.gov](http://www.P65Warnings.ca.gov).



**OLYMPUS  
LOCK** INC.

# 500M | 600M

## R Series: Non-Ferrous MRI Deadbolt Door & Drawer Cabinet Locks

**ANSI/BHMA Grade 1**  
**E07121 | E07041**  
**For use in medical**  
**MRI applications**

**OPTIONAL ACCESSORIES** - See our website for a complete list of optional components.

### Internal plastic spacers

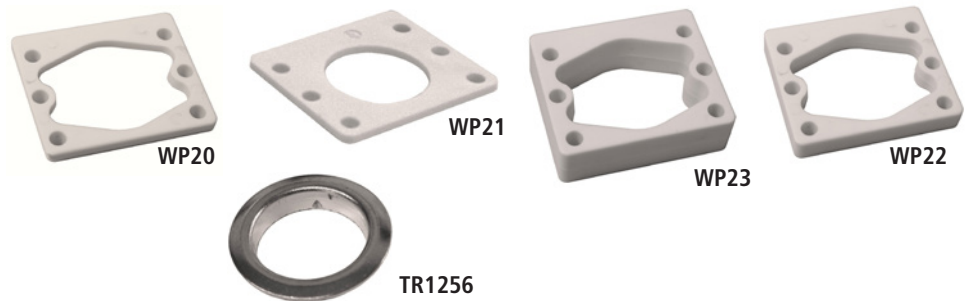
- WP20 3/16" thick plastic spacer
- WP21 3/32" thick plastic spacer
- WP22 1/4" thick plastic spacers
- WP23 1/2" thick plastic spacers

### Trim Ring

- TR1256 trim ring

### Extended bolt

- 15-1-35 (see below for installed dimensions)



### Through-bolt plate

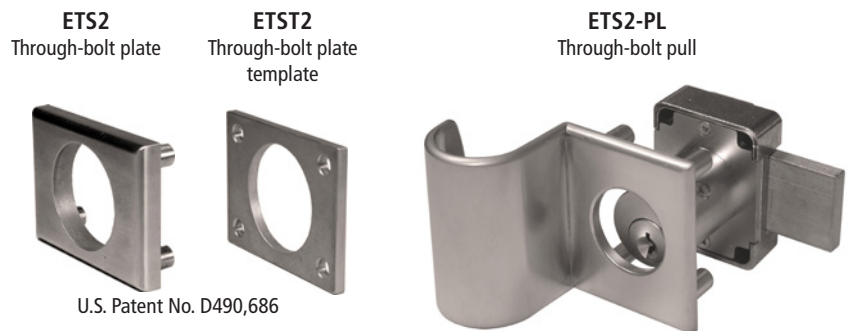
External metal 1/8" or 1/4" through-bolt plate allows for an attractive flush mounting of the cabinet lock face. Available in US3 or US26D finish.

- ETS2-125 through-bolt plate, 1/8" thick
- ETS2-250 through-bolt plate, 1/4" thick

### Through-bolt plate template

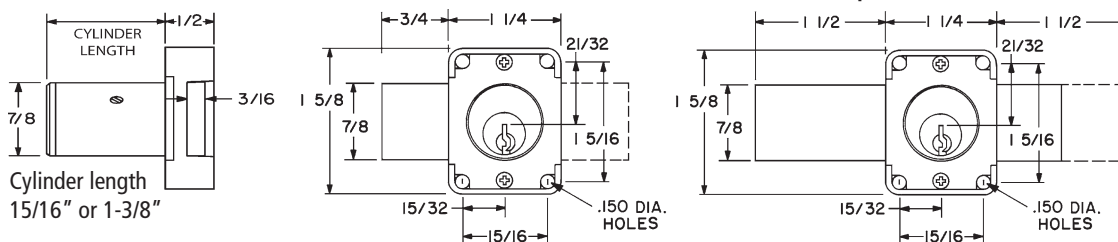
Allows for proper mounting hole placement of through-bolt plate. Can be used as a 1/8" shim spacer. Available in US3 and US26D finish.

- ETST2 through-bolt plate template

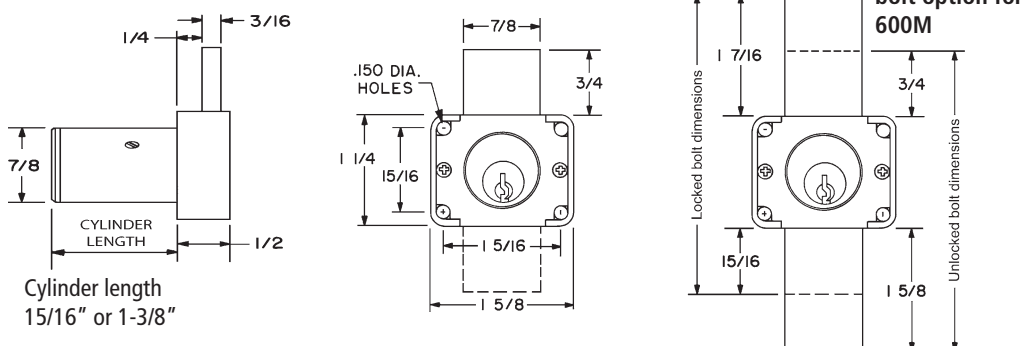


## DIMENSIONS

### 500M Cabinet Door Lock



### 600M Drawer Lock



### Key-Retaining Handing Chart

<b>KL</b> left-hand	<b>KR</b> right-hand
<b>KV</b> vertical-hand	<b>inverted-hand</b> <b>KI</b>

Handing information is only required for key-retaining function. Standard function locks are non-handed.