

# 777 | 888

## IC: Door & Drawer Cabinet Locks for Schlage Full-Size Cores



**ANSI/BHMA Grade 1  
E07121 | E07041**  
**Woodwork Institute (WI)  
acknowledged product**

### SPECIFICATIONS

**ANSI/BHMA:** Passed ANSI/BHMA A156.11 Grade 1 performance requirements. Equivalent to E07121 (777ICP) / E07041 (888ICP)

**Body:** Zinc die cast

**Cylinder length:** 1-7/16"

**Barrel diameter:** 1-1/8"

**Finish:** 26D, US3 or 10B

**Packaged:** Packed 10 per box

### CYLINDER INFORMATION

**Cylinder:** Not included

**Accepts:** Schlage large format/full-size IC cylinders

- Schlage Quad, Numbered Section, and Schlage Classic IC cores
- Schlage Primus® and Everest large format IC cores
- Mul-T-Lock large format IC cores

**Compatible electronic cylinders:** VIDEX CyberLock LFIC cylinders

### INCLUDED ACCESSORIES

- 7788-PA-D actuator to operate lock without core
- 10-350 plastic spacers (qty 3)
- 10-054 1/4" plastic bar strike
- 10-055 1/2" plastic bar strike

### OPTIONAL ACCESSORIES

- Spacers:** 10-350 (1/8" thick), 10-348 (1/4" thick), 10-349 (1/2" thick)
- Strikes:** 10-052, 10-056, 10-057, 10-058, 12-2, 12-3, 12-4
- Trim ring:** TR78
- Through-bolt hardware:** ETS1/ETS4/ETS5 trim plate, ETS1-PL trim pull and ETST1 template



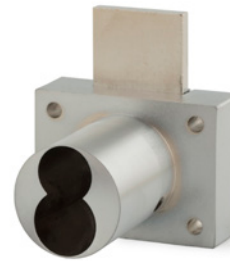
ANSI/BHMA No. E07121

### 777

**Function:** Cabinet door lock  
**Bolt throw:** 15/16"

**Standard function:** Key removable in locked and unlocked position.

**Key-retaining function:** Specify handing and core type (Standard/Classic or Primus/Everest) when ordering



ANSI/BHMA No. E07041

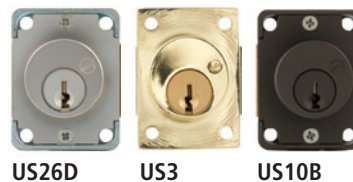
### 888

**Function:** Drawer lock  
**Bolt throw:** 7/8"

**Standard function:** Key removable in locked and unlocked position.

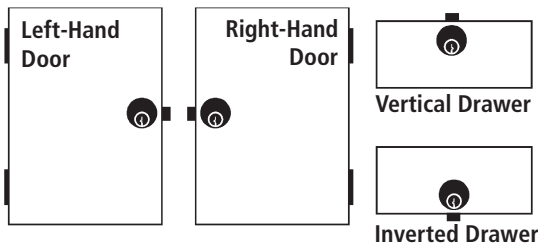
**Key-retaining function:** Specify handing and core type (Standard/Classic or Primus/Everest) when ordering

### AVAILABLE FINISHES



US26D US3 US10B

### HANDING CHART



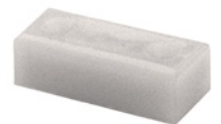
### INCLUDED ACCESSORIES



**10-350 internal spacers**  
For a flush fit on varying material thicknesses



**10-054 bar strike**  
1/4" plastic bar strike



**10-055 bar strike**  
1/2" plastic bar strike

**WARNING:** This product can expose you to chemicals including chromium, which is known to the State of California to cause cancer and birth defects or other reproductive harm. For more information go to [www.P65Warnings.ca.gov](http://www.P65Warnings.ca.gov).



## IC: Door & Drawer Cabinet Locks for Schlage Full-Size Cores

### OPTIONAL ACCESSORIES

#### Internal Plastic Spacers

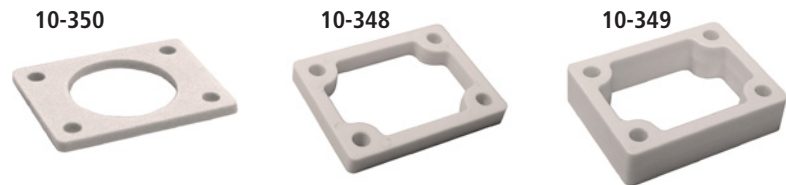
- 10-350 1/8" thick plastic spacers
- 10-348 1/4" thick plastic spacers
- 10-349 1/2" thick plastic spacers

#### Strikes

- Plastic bar strikes: 10-054, 10-055, 10-057, 10-058.
- Metal strikes: 10-056 12-1, 12-2, 12-3, 12-4

#### Trim Ring

- TR78 trim ring



#### Through-Bolt Mounting Plate

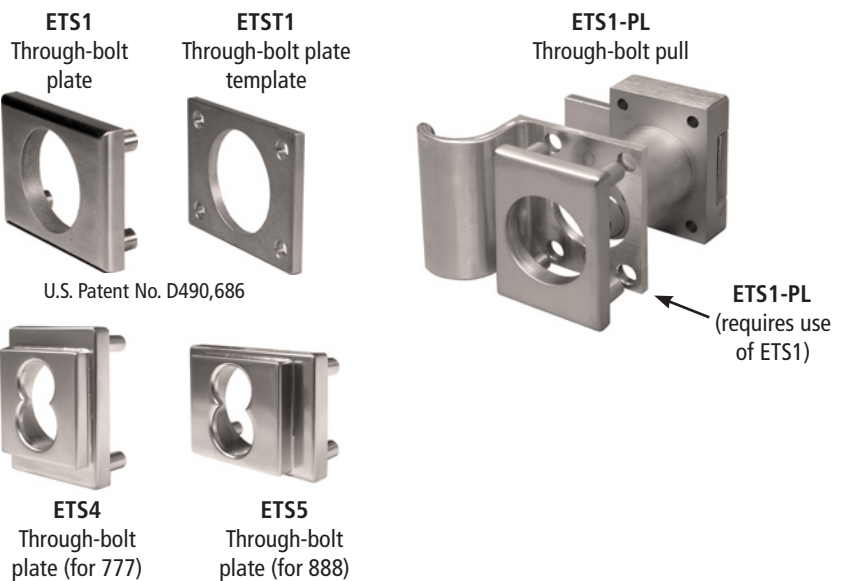
External metal 1/8" or 1/4" through-bolt plate allows for secure and attractive flush mounting of the cabinet lock face. Available in US3 or US26D finish.

- ETS1-125 through-bolt plate, 1/8" thick
- ETS1-250 through-bolt plate, 1/4" thick
- ETS4 through bolt plate for 777, 1/2" thick
- ETS5 through bolt plate for 888, 1/2" thick

#### Through-Bolt Mounting Plate Template

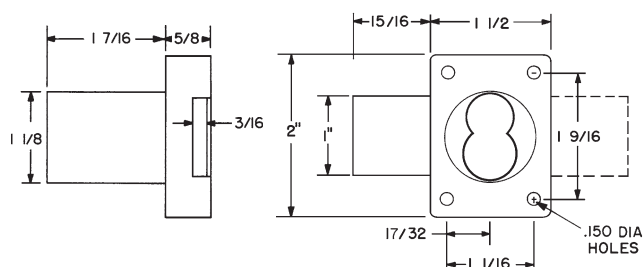
Allows for proper mounting hole placement of through-bolt plate. Can be used as a 1/8" shim spacer. Available in US3 and US26D finish.

- ETST2 through-bolt plate template



### DIMENSIONS

#### 777 Cabinet Door Lock



#### 888 Drawer Lock

