

850S

S Series: Schlage C Keyway Deadlatching Drawer Lock



SPECIFICATIONS

Rekeyable: Easily rekeyable via set-screw cylinder removal mechanism

U.S. Patent Nos: 4,899,563; 4,920,774; 5,657,652

Body: Zinc die cast

Cylinder length: 1-1/8" or 1-3/8"

Barrel diameter: 1-1/8"

Finish: 26D or US3

Packaged: Packed 10 per box

INCLUDED ACCESSORIES

For 1-1/8" barrel length locks:

10-350 plastic spacers (qty 2)

850-210 matching strike

For 1-3/8" barrel length locks:

850-211 matching strike

850S KEYING INFORMATION

Keying: Can be keyed together with other Schlage C Keyway locks

Keyway: Schlage C keyway

Keys: Includes 2 keys per lock

Cylinder: Solid brass, pin tumbler

Stock keying: KD/KA - 5 pin standard

Stock KA#: 101, 102

Masterkeying: 5 pin standard, 6-pin available

Grand masterkeying: Available

Keyblank 5-pin: KBSC-5

Keyblank 6-pin: KBSC-6

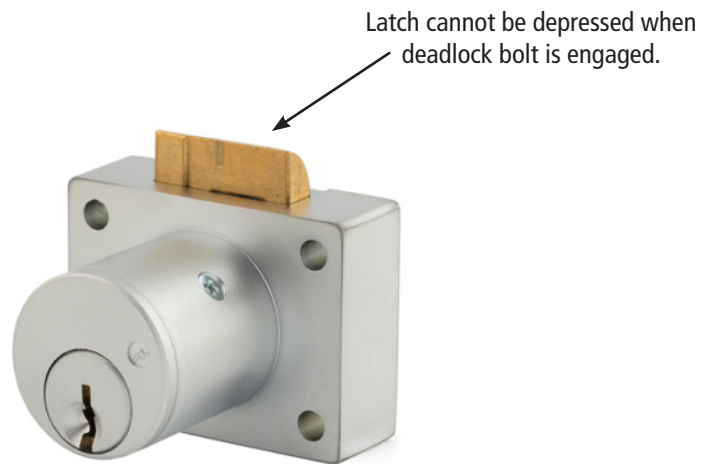
OPTIONAL ACCESSORIES

Spacers: 10-350 spacer (1/8" thick), 10-348 spacer (1/4" thick), 10-349 spacer (1/2" thick)

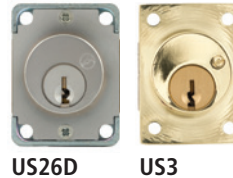
Trim ring: TR78 trim ring

Cylinder: 78-201 Series (page 54)

Through-bolt hardware: ETS1 trim plate, ETS1-PL trim pull and ETST1 template



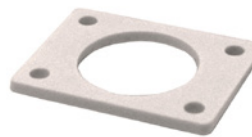
AVAILABLE FINISHES



US26D

US3

INCLUDED ACCESSORIES



10-350 internal spacers
For a flush fit on varying material thicknesses



850-210 / 850-211
lip strike



WARNING: This product can expose you to chemicals including chromium, which is known to the State of California to cause cancer and birth defects or other reproductive harm. For more information go to www.P65Warnings.ca.gov.



OLYMPUS[®]
LOCK
INC

850S

S Series: Schlage C Keyway Deadlatching Drawer Lock

OPTIONAL ACCESSORIES - See our website for a complete list of optional components.

Internal Plastic Spacers

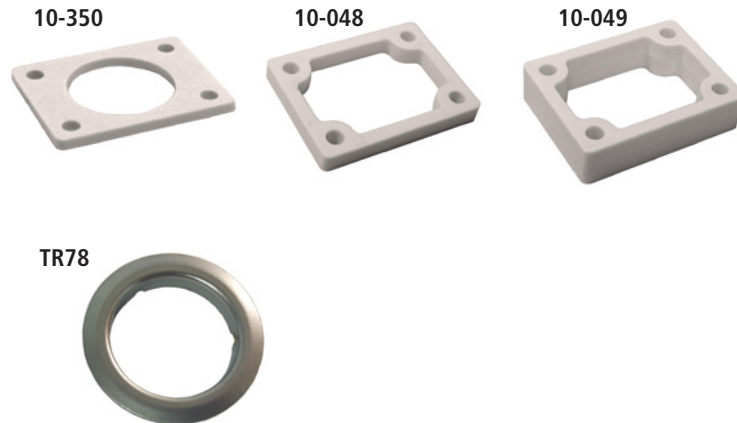
- 10-350 1/8" thick plastic spacers
- 10-348 1/4" thick plastic spacers
- 10-349 1/2" thick plastic spacers

Strikes

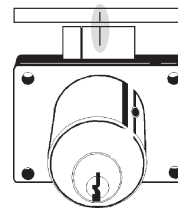
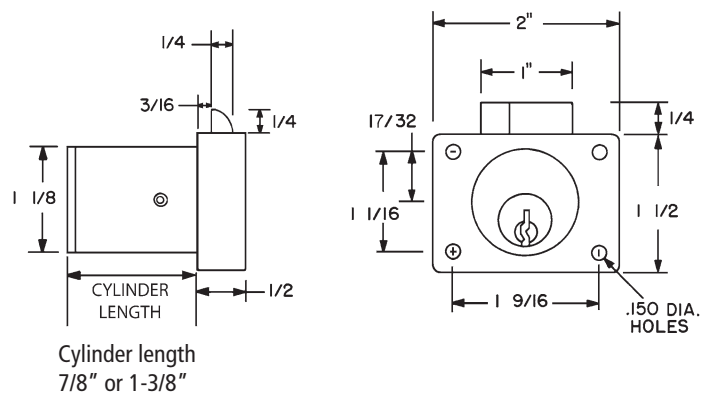
- Plastic bar strikes: 10-054, 10-055, 10-057, 10-058. Metal strikes: 10-056 12-1, 12-2, 12-3, 12-4, 999-STRIKE, L78ST-1, L78ST-2

Trim Ring

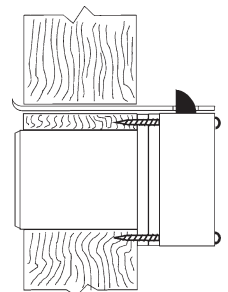
- TR78 trim ring



DIMENSIONS | TYPICAL INSTALLATION



Note: Line up center mark on latch with center mark on strike for correct strike placement.



Note: Strike must be lined up so that dead lock portion of latch is depressed when drawer is closed.