

996 | 997

R Series: Door & Drawer Latch Lock — 4-way Reversible

*Easily field reversible
between door and
drawer function*

SPECIFICATIONS

Function: Spring latch

Keying: Can be keyed together with other R Series locks

Reversible: Easily reversible between door and drawer function

Rekeyable: Easily rekeyable via set screw cylinder release mechanism

US Patent Nos: 4,899,563; 7,874,189 B2

Body: Zinc die cast

Cylinder: Solid brass, pin tumbler

Barrel length: 15/16" or 1-3/8"

Barrel diameter: 7/8"

Latch projection: 1/4"

Finish: 26D satin chrome

Packaged: Packed 10 per box

KEYING INFORMATION

Keyway: R Series (equivalent to CCL R1 system)

Keys: Includes 2 keys per lock

Stock keying: KD/KA - 5 pin standard

Stock KA#: 4T21579, 4T37526

Masterkeyed: 5 pin standard, 6 pin available

Grand masterkeyed: Available

Keyblank 5-pin: KBR-5-NP

(equivalent to CO106, 1003A)

Keyblank 6-pin: KBR-6-NP

(equivalent to L1003A)

INCLUDED ACCESSORIES

Strike: 999-STRIKE (slotted lip strike)

OPTIONAL ACCESSORIES

Spacer: WP24 (1/8" thick)

Trim ring: TR1256

Through-bolt hardware: ETS6 through-bolt plate



DRAWER 996V
Vertical Hand (VH)

996 Drawer

Function: Drawer lock

Handing: Available in the vertical or inverted position



DRAWER 996I
Inverted Hand (IH)

997 Door

Function: Cabinet door lock

Handing: Available in the left-hand or right-hand position

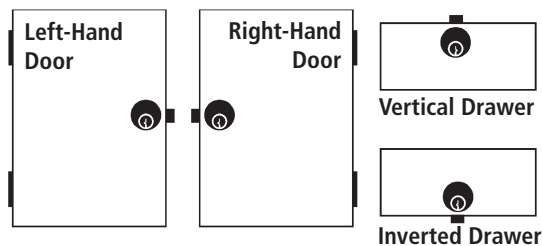


DOOR 997L
Left Hand (LH)



DOOR 997R
Right Hand (RH)

HANDING CHART



WARNING: This product can expose you to chemicals including chromium, which is known to the State of California to cause cancer and birth defects or other reproductive harm. For more information go to www.P65Warnings.ca.gov.



OLYMPUS[®]
LOCK

996 | 997

R Series: Door & Drawer Latch Lock — 4-way Reversible

OPTIONAL ACCESSORIES

Internal plastic spacers

- WP24 1/8" thick plastic spacers

Strikes

- 12-1, 12-2, 12-3, 12-4, 07S

Trim Ring

- TR1256 trim ring



Through-bolt plate

External metal 1/8" or through-bolt plate allows for an attractive flush mounting of the cabinet lock face. Available in US3 or US26D finish.

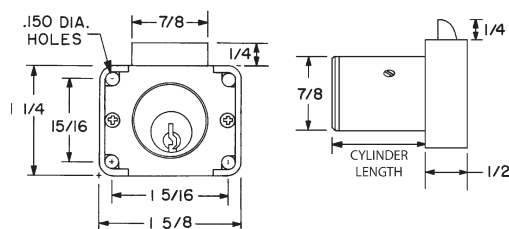
- ETS6 through-bolt plate, 1/8" thick



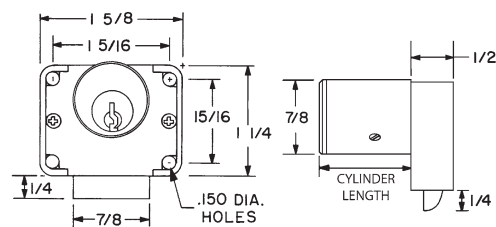
U.S. Patent No. D490,686

DIMENSIONS

996 Drawer Lock

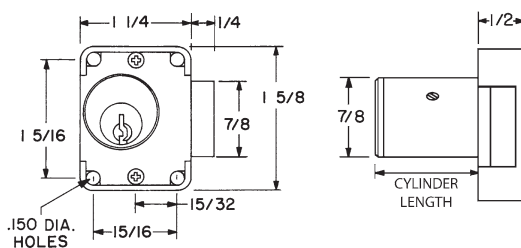


996V VERTICAL HAND

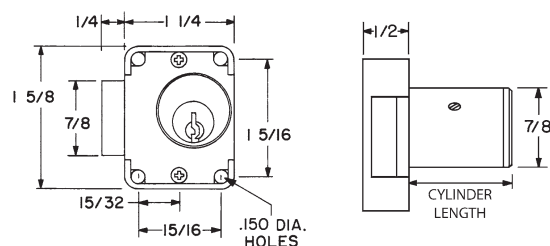


996I INVERTED HAND

997 Cabinet Door Lock



997L LEFT HAND



997R RIGHT HAND