

998 | 999

N Series: Door & Drawer Latch Lock — 4-way Reversible

*Easily field reversible
between door and
drawer function*

SPECIFICATIONS

- Function:** Spring latch
- Keying:** Can be keyed together with other N Series locks
- Reversible:** Easily reversible between door and drawer function
- Rekeyable:** Easily rekeyable via set screw cylinder release mechanism
- US Patent Nos:** 4,899,563; 7,874,189 B2
- Body:** Zinc die cast
- Cylinder:** Solid brass, pin tumbler
- Barrel length:** 15/16" or 1-3/8"
- Barrel diameter:** 7/8"
- Latch projection:** 1/4"
- Finish:** 26D
- Packaged:** Packed 10 per box

KEYING INFORMATION

- Keyway:** N Series (equivalent to National D4291 4-pin or D4292 5-pin system)
- Keys:** Includes 2 keys per lock
- Stock keying:** KD/KA - 4 pin standard
- Stock KA#:** 101, 103, 107, 915
- Masterkeyed:** 5 pin standard
- Grand masterkeyed:** Available
- Keyblank 4-pin:** KBN-4-NP (equivalent to NA14, 1069L)
- Keyblank 5-pin:** KBN-5-NP (equivalent to NA12, 1069LA)

INCLUDED ACCESSORIES

Strike: 999-STRIKE (slotted lip strike)

OPTIONAL ACCESSORIES

- Spacer:** WP24 (1/8" thick)
- Trim ring:** TR1256
- Through-bolt hardware:** ETS6 through-bolt plate



DRAWER 998V
Vertical Hand (VH)

998 Drawer

- Function:** Drawer lock
- Handing:** Available in the vertical or inverted position



DRAWER 998I
Inverted Hand (IH)

999 Door

- Function:** Cabinet door lock
- Handing:** Available in the left-hand or right-hand position

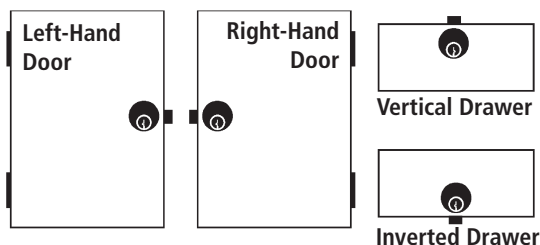


DOOR 999L
Left Hand (LH)



DOOR 999R
Right Hand (RH)

HANDING CHART



WARNING: This product can expose you to chemicals including chromium, which is known to the State of California to cause cancer and birth defects or other reproductive harm. For more information go to www.P65Warnings.ca.gov.



998 | 999

N Series: Door & Drawer Latch Lock — 4-way Reversible

OPTIONAL ACCESSORIES

Internal plastic spacers

- WP24 1/8" thick plastic spacers

Strikes

- 12-1, 12-2, 12-3, 12-4, 075

Trim Ring

- TR1256 trim ring



Through-bolt plate

External metal 1/8" or through-bolt plate allows for an attractive flush mounting of the cabinet lock face. Available in US3 or US26D finish.

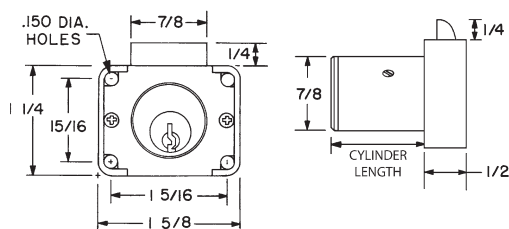
- ETS6 through-bolt plate, 1/8" thick



U.S. Patent No. D490,686

DIMENSIONS

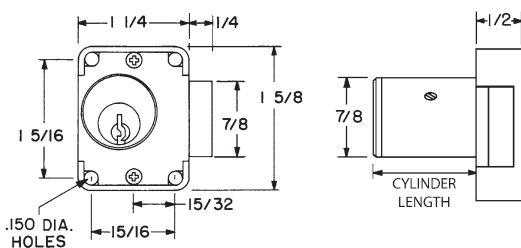
998 Drawer Lock



998V VERTICAL HAND

998I INVERTED HAND

999 Cabinet Door Lock



998L LEFT HAND

998R RIGHT HAND