

ETS SERIES

Exterior Through-Bolt Mounting Plates for Olympus Cabinet Locks



U.S. Patent No.
D490,686 S

SPECIFICATIONS

Our through-bolt trim spacers, pulls and templates provide added security and flexibility to our line of door and drawer cabinet locks. These items can be used in combination or separately to achieve a variety of configurations. The through-bolt mounting feature provides increased security in particleboard applications.

Use with 700, 721, 754, 777, 800, 850, 854, 888, 931, 950, L72V, L92V

- ETS1-125 - 1/8" trim spacer
- ETS1-250 - 1/4" trim spacer
- ETS1-PL - Cabinet pull
- ETST1 - Trim spacer template

Use with 100, 200, 500, 600, L20V

- ETS2-125 - 1/8" trim spacer
- ETS2-250 - 1/4" trim spacer
- ETS2-PL - Cabinet pull
- ETST2 - Trim spacer template

ETS1 For 1-1/8" barrel diameter locks: 700, 721, 754, 777, 800, 850, 854, 888, 931, 950, L72V, L92V



ETS1
2 sizes available



ETST1



ETS1-PL

Note: ETS1-PL requires use of either ETS1-125 or ETS1-250.

ETS2 For 7/8" barrel diameter locks: 100, 200, 500, 600, L20V



ETS2
2 sizes available



ETST2



ETS2-PL



WARNING: This product can expose you to chemicals including chromium, which is known to the State of California to cause cancer and birth defects or other reproductive harm. For more information go to www.P65Warnings.ca.gov.



OLYMPUS[®]
LOCK
INC

ETS SERIES

Exterior Through-Bolt Mounting Plates for Olympus Cabinet Locks

ETS SERIES

EXTERIOR THROUGH-BOLT PLATE

Attractive mounting: External metal through-bolt plate allows for flush mounting of the cabinet lock face with face of cabinet.

Increases security: Reinforces the cabinet face by direct connection of lock mounting screws to through-bolt plate's binder posts.

Available finishes: US3 and 26D

Includes: Mounting screws

ETST SERIES

SPACER/TEMPLATE FOR THROUGH-BOLT PLATE

Mounting guide: The spacer/template allows for proper mounting hole placement of external through-bolt plate.

Spacer: Can be used as a 1/8" shim spacer

Available finishes: US3 and 26D

ETS-PL SERIES

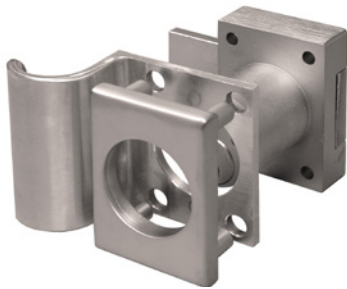
THROUGH-BOLT HANDLE/PULL

ETS1-PL: External metal pull requires use of ETS1. For use with 1-1/8" locks: 700, 721, 754, 777, 800, 850, 854, 888, 931, 950, L72V, L92V

Available finishes: US3 and 26D

ETS2-PL: External metal pull for 7/8" diameter locks: 100, 200, 500, 600, L20V

Available finishes: US3 and 26D



ETS1-PL

Cabinet pull for use with 1-1/8" diameter cabinet locks. (Requires ETS1)



ETS1-PL

ETS2-PL

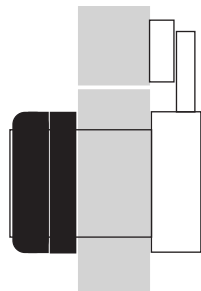
Cabinet pull for use 7/8" diameter cabinet locks.



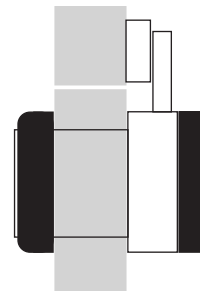
ETS2-PL

External Through-Bolt Plate & Template

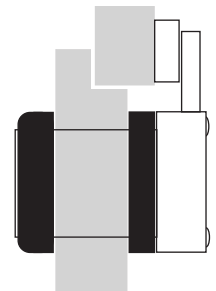
Below illustrations do not represent all possible configurations.



Flush mount with spacer and template on front of cabinet



Flush mount with spacer in front and template behind



Partial overlay with spacer in front and template between cabinet and back of lock