

## SW-1

*Note: Switches not included.*

### Switch Accessory Pack For 1-1/8" Diameter Cam Locks

#### SPECIFICATIONS

**Use:** Includes parts to convert 720, 820, 920, CR25 ME93, SA54 or YA93 series cam locks into switch locks

**Special note:** Cannot be used with 720B-DM direct drive

**Configuration:** Can be configured for 1 or 2 switches

**Packaged:** Each

#### GENERAL FEATURES

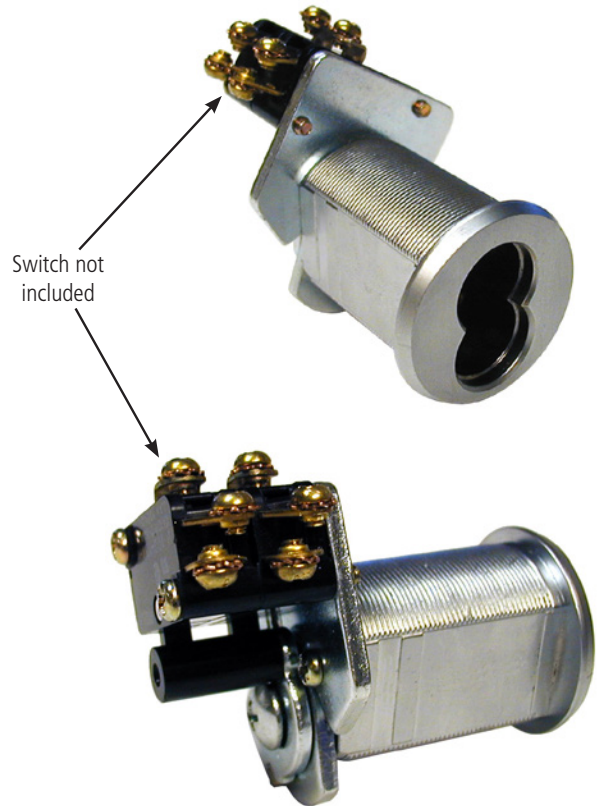
- Includes parts to convert Olympus Lock 1-1/8" Series cam locks into switch locks.
- Accepts pin plunger style, snap acting, miniature switches.
- Switch manufacturers: Omron, Honeywell, Cherry, Panasonic or C & K.
- See the reverse side for a complete list of available switches for use with the SW-1.

#### SWITCHES

**Switches:** Not included.

**Accepts:** Pin plunger style, snap acting, miniature switches:

- Omron - V Series
- Honeywell (MicroSwitch) - V Series
- Cherry - E Series
- Panasonic (Aromat) - ABV Type
- C&K (ITT) - TM & TF Series



#### THE SW-1 CAN BE USED WITH THE FOLLOWING OLYMPUS PRODUCTS



**720LM/DM**  
Small Format  
IC Core



**820SC/820LC**  
Schlage C Keyway  
or Less Cylinder



**920LM/DM**  
Schlage Full-Size  
IC Core



**CR25LM/DM**  
Corbin/Russwin  
IC Core



**SA54LM/DM**  
Corbin/Russwin  
IC Core



**ME93**  
Medeco  
IC Core



**YA93**  
Yale  
IC Core



**WARNING:** This product can expose you to chemicals including chromium, which is known to the State of California to cause cancer and birth defects or other reproductive harm. For more information go to [www.P65Warnings.ca.gov](http://www.P65Warnings.ca.gov).



**OLYMPUS<sup>®</sup>**  
**LOCK** INC.

# SW-1

**Note: Switches not included.**

## Switch Accessory Pack For 1-1/8" Diameter Cam Locks

**OPTIONAL ACCESSORIES** - See our website for a complete list of optional components.

### SW-1 Accessory Pack

- Includes parts to convert 720, 820, 920, CR25 ME93, SA54 or YA93 series cam locks into switch locks
- Switch not included
- Accepts pin plunger style, snap acting, miniature switches
- Allows stacking of up to 2 switches

### SW-1 Accessory Pack



#### Manufacturers

- Omron - V Series
- Honeywell (MicroSwitch) - V Series
- Cherry - E Series
- Panasonic (Aromat) - ABV Type
- C&K (ITT) - TM & TF Series

#### Common Suppliers

- Newark Electronics 800-463-9275
- Allied Electronics 866-433-5722
- McMaster-Carr 562-463-4277

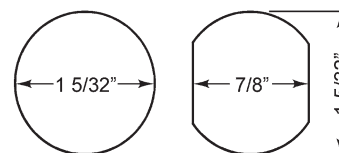


Switch not included.

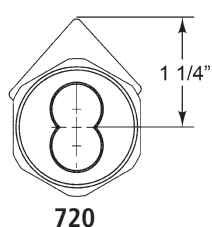


TR201, TR202, TR203, TR204  
Trim Collars Available separately

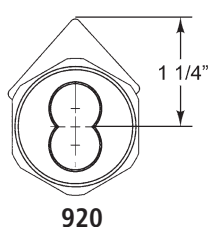
#### MOUNTING CUTOUT



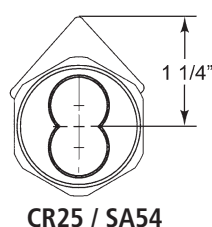
## DIMENSIONS



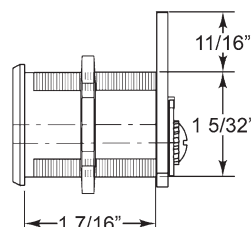
720



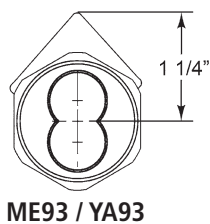
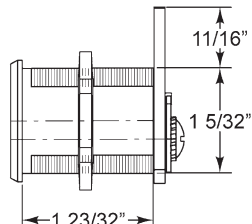
920



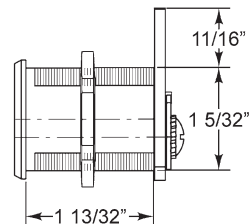
CR25 / SA54



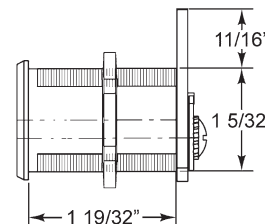
820SC / 820LC



ME93 / YA93



ME93



YA93